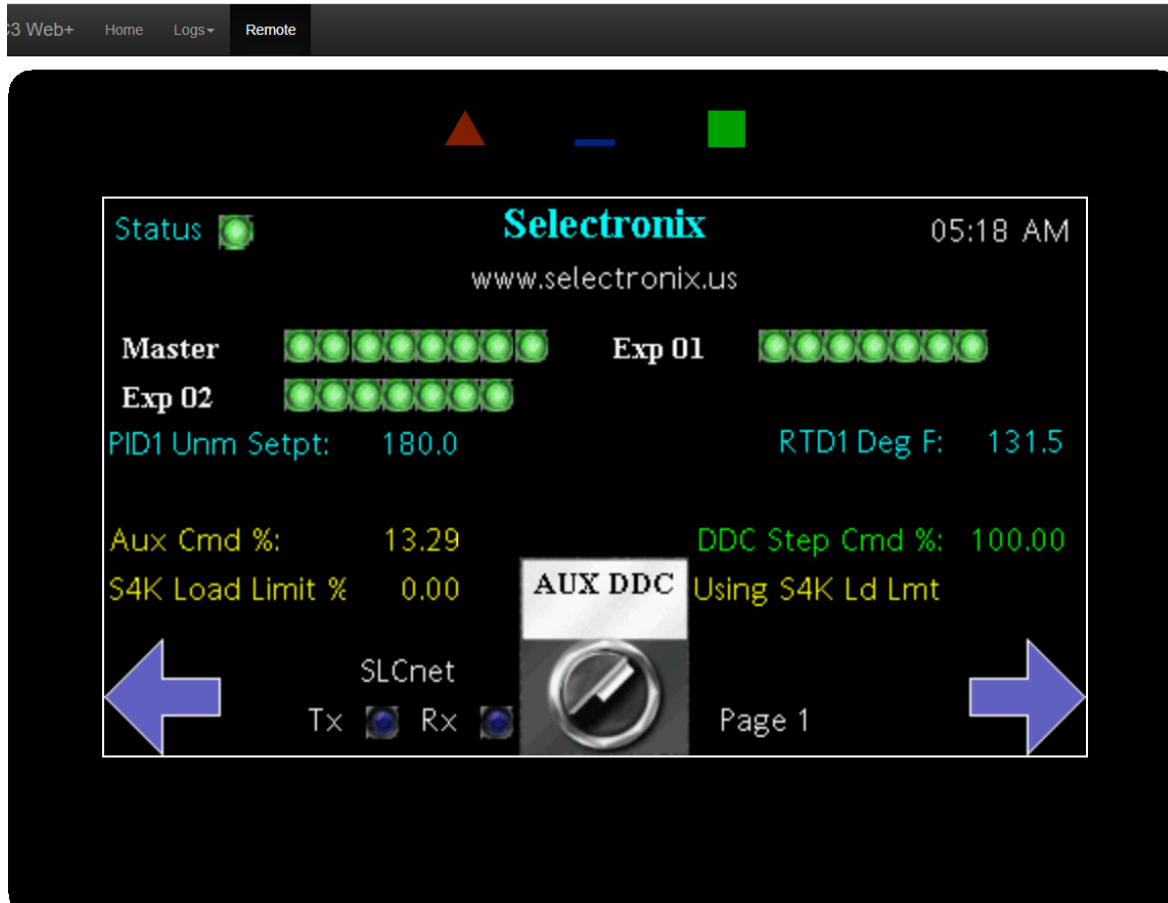


Announcing CR3000 Support!



- ***Control and Monitoring of the Selectronix Building Management Interface using a Web Browser***
 - ***Realtime, interactive operation and display of the actual pages of the SLC4075 Touchscreen Gateway from any device that has access to the internet!***
 - **Above is a screen shot of the touchscreen accessed via a web browser!**
 - **Ideal for customers who need actual access to the screens for training or remote access.**

- **Data Logging provides historical recordings of critical data points for installations that do not have a supervisory building management system.**
- **Send email and/or SMS notifications on alarm conditions.**
- ***Maintains the same familiar touchscreen display pages of the CR1000***
- **Has the same features as the CR1000 plus additional benefits!**
 - ***Wider range power supply input of 10-30 VDC provides higher immunity for locations with harsh power environments or poor input power quality.***
 - **Accepts one expansion communication module to add CANOPEN, J1939, PROFIBUS, DEVICENET AND MORE**
 - **Same form factor as the CR1000**
 - **NEMA 4X/IP66 Front Panel**
 - **SD Card Socket for loading database in the field**
 - **One USB device port to load the unit's configuration or transfer data to and from a PC**
 - **Web Server**
 - **Configured using CRIMSON® 3.1 Software**
 - **UL/cUL, CE, UL/cUL Hazardous**

Questions?

Email us at customerservice@selectronix.us or call us at (425) 788-2979